

NZ.9047

HIGHLIGHTS

- Adjustable tilt, swivel, and rotate functions for optimal positioning
- Durable construction ensures long-lasting performance
- Simple and quick installation process
- Designed for NexiusZoom
- Also suitable for StereoBlue zoom, MZ.4600 and MZ.4700 microscope heads
- Guiding system for ring light/camera cables



● NZ.9047

TECHNICAL SPECIFICATIONS

ADJUSTABILITY

Tilt range	$\pm 90^\circ$
Swivel range	180°
Rotation range	360°
Height range	max. 62 cm

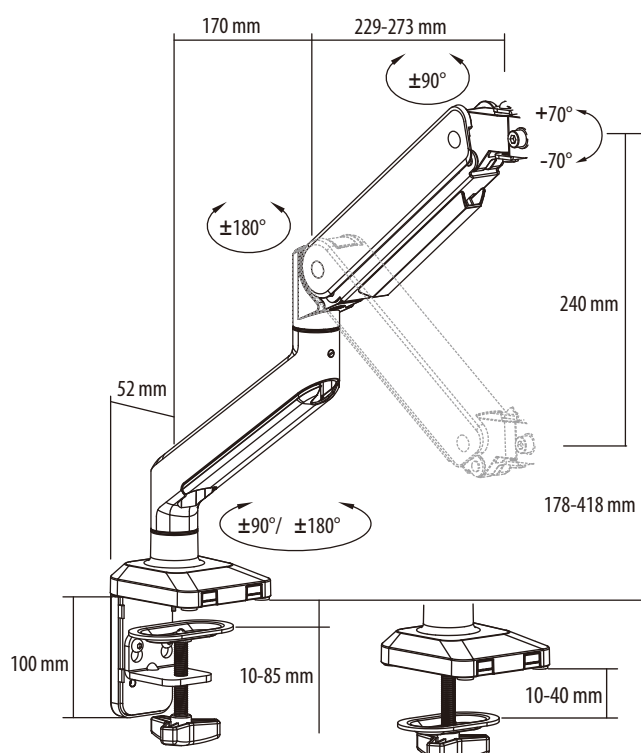
COMPATIBILITY

Head Holder	compatible with NexiusZoom microscope heads (and other 76 mm heads, such as StereoBlue and MZ.4700 camera)
-------------	--

DIMENSIONS (STAND WITHOUT HEAD HOLDER)

Maximum height	500 mm
Arm length	400 mm

DIMENSIONS



MAXIMUM HEIGHT
ARM LENGTH

500 mm
400 mm



● NZ.9047 with
NexiusZoom head and ring light

DIMENSIONS (HEAD HOLDER)

Total height	100 mm
Width	145 mm
Depth	32 mm
Holder diameter	76 mm

MATERIALS

Construction	High-grade steel and aluminum
Finish	Powder-coated for durability

WEIGHT

Stand weight	4.5 kg
Head holder weight	1 kg

INSTALLATION

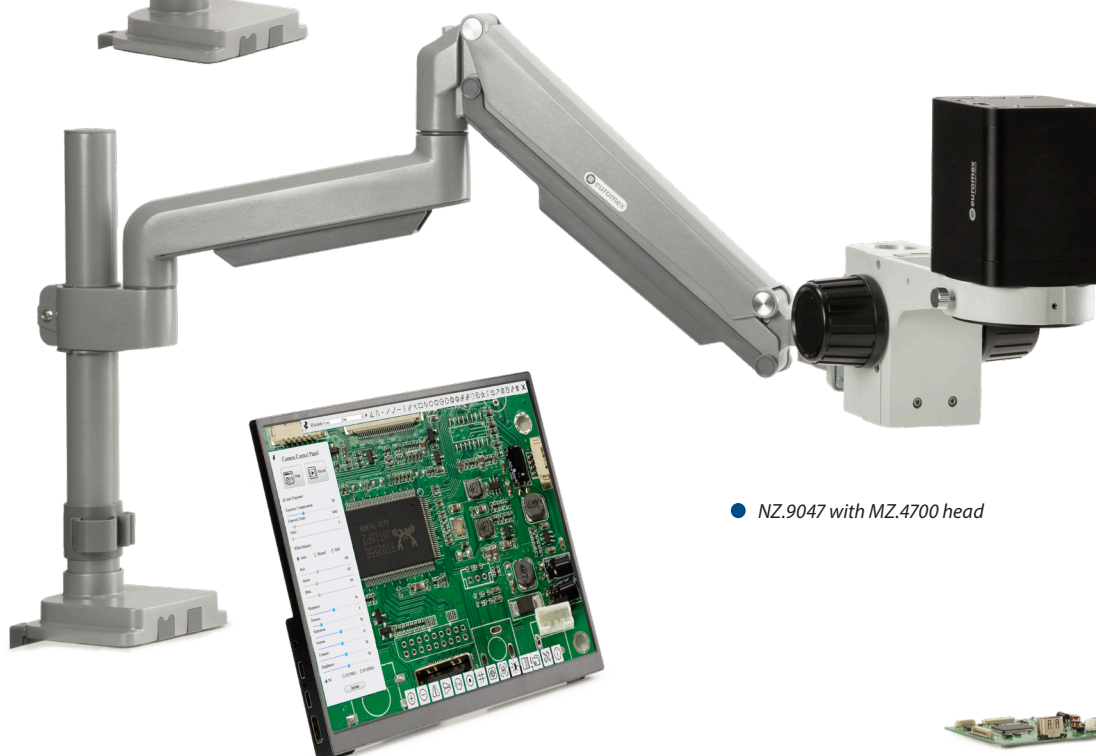
Mounting	Desktop clamp with adjustable width 10-85 mm, or drilled through the desk for permanent fixation
Assembly	Quick assembly. Manual and tool included



● NZ.9047 with StereoBlue zoom head



● NZ.9047 with MZ.4600 head



● NZ.9047 with MZ.4700 head



www.euromex.com

