

Accessories for Shaker

Universal Platform



Universal Platform

Basic accessories required to use separated funnels, erlenmeyer flask, test tube, etc.



Dual Universal Platform

Maximum sample loading possible with two-stage structure. (SKC-7000 series model exclusively)

Accessories for Universal Platform



Flask Clamp (STS / Plastic)

Erlenmeyer flask mounting (50ml – 6L)
High-strength spring maintains excellent clamping.



Starter Kit

Consisting of plastic clamps that are commonly used on Universal Platforms. 50ml, 100ml, 250ml, 500ml, 1L, 2L.



Funnel Clamp

Separated funnel mounting (250ml - 2L)
Easy detachment and stable clamping.



Test Tube Rack

Test tube mounting (Ø8 mm - Ø35 mm)
Easily adjustable angle.



Microplate Holder

Various configurations for microplate
Single, Tower, Flat A (Large), Flat B (Small)



Lab Sticker

Excellent adhesion at 200mm x 200mm size,
applied to petri dishes, culture bottles, etc.
Temp. Range (°C): 15-60 Max. Speed (rpm): 250

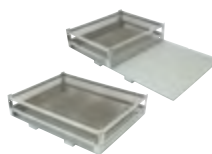
LC Connected



LC GreenBox

Real-time monitoring of device operation via mobile app.
Up to 4 devices can be connected.

Set Accessories



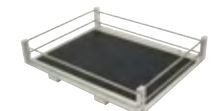
Spring Wire Rack, Half Spring Wire Rack

Available to load various sample container shapes.
For SKC-7000, half type can be used that providing both a universal platform and spring wire rack.



Dedicated Platform

Accessories (250 ml, 500 ml) installed on platform with maximum quantity of flask clamps.



Rubber Mat

Convenient for use with culture bottles and petri dishes with rubber plate to prevent slipping on the floor.



Universal Attachment

Floor rubber plate and adjustable clamping rod make it a convenient structure for a wide range of applications.



Microplate Tray (Dual Stacking Tray)

Dual stacking structure for microplate allows for excellent space utilization.



Microplate Tray (Large Tray)

The tray for microplates with anti-slip rubber plate on the bottom. (OS-2000, CMS-350)



Stage Rack

The rack maximizes space efficiency by stacking up to four shakers.
(OS-2000/4000/7000)



Weight Increaser

Accessories allowing for use of SKC series shaker up to 500rpm.

Starter Kit

Description	Composition of Clamp	Cat. No.
Starter Kit I	50 ml (2), 100 ml (2), 250 ml (4), 500 ml (4), 1L (2), 2L (2)	AAA30581
Starter Kit II	50 ml (3), 100 ml (3), 250 ml (6), 500 ml (6)	AAA30582

Description	OS-2000	OS-3000	OS-4000	OS-7000 Series	SKC-6000 Series	SKC-7000 Series	CMS-350
Spring Wire Rack (Half)	-	-	-	-	-	AAA30525 ¹⁾ AAA30526 ²⁾	-
Dedicated Platforms (250 mL)	-	AAA23611-V1	AAA23621-V1	AAA23634	-	-	-
Dedicated Platforms (500 mL)	-	AAA23613-V1	AAA23622-V1	AAA23635	-	-	-
Rubber Mat	AAA3A531-V1	AAA23531-V1	AAA23532-V1	AAA23534	AAA30531 ¹⁾ AAA30532 ²⁾	AAA30533 ¹⁾ AAA30534 ²⁾	AAA38501
Universal Attachment	AAA3A511-V1	AAA23511-V1	AAA23512-V1	AAA23505	AAA30511 ¹⁾ AAA30512 ²⁾	AAA30513 ¹⁾ AAA30514 ²⁾	AAA3B521
Lab Sticker	AAA30551	AAA30551	AAA30551	AAA30551	AAA30551	AAA30551	AAA30551
Microplate Tray	Dual Stacking	AAA3A541	-	-	-	-	AAA3B531
	Large Tray	AAA3A542	-	-	-	-	AAA3B532
Stage Rack	4 Stages	-	AAA31541-V1	AAA31542-V1	AAA31702-V1	-	-
	3 Stages	-	-	-	AAA31703-V1	-	-
Weight Increaser	-	-	-	-	AAA30562	AAA30562 AAA30561	-

1) Small Size
2) Large Size