

## Hold Your Proteins to a Higher Standard

Ready to use, just load and run

Available in Blue or TriColor format

Covers a broad range from 5 - 245 kDa\*

Enhanced bands provide quick reference points

500µl suitable for 100 lanes (5µl per lane)

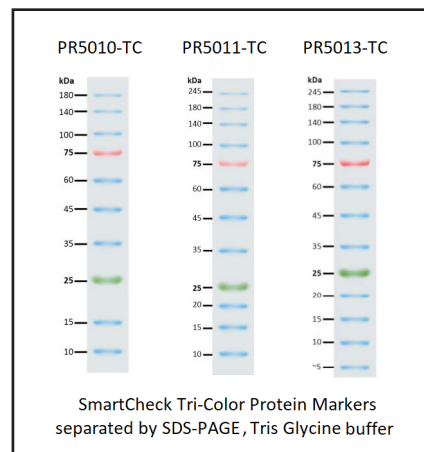
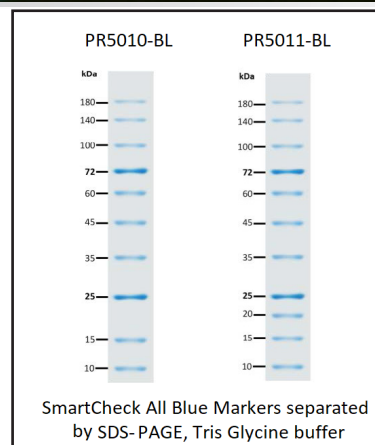
Hold your proteins to a higher standard with Accuris SmartCheck™ Protein Markers. Available in All Blue or Tri-Color formats, these markers provide accurate reference points to determine protein size during electrophoresis. SmartCheck markers are compatible with Tris Glycine, Bis-Tris (MOPS) and Bis-Tris (MES) and can be used for western blotting with minimal washout.

Each package of SmartCheck™ markers includes 2 tubes of 250ul, allowing less freeze-thaw cycles during product usage thereby extending the shelf life.

The SmartCheck™ All Blue Regular Range Protein Markers include 10 or 11 pre-stained proteins covering a range of molecular weights from 10 to 180 kDa.\* Proteins are covalently coupled with a blue chromophore, with two enhanced intensity reference bands (at 25 kDa and 72 kDa) to allow easy visual interpretation.

The SmartCheck™ Tri-Color Regular Range Protein Markers are ready to use standards with 10, 12, or 13 pre-stained proteins covering a wide range of molecular weights from 5 to 245 kDa.\* Proteins are covalently coupled with a blue chromophore with two alternate-colored reference bands (one green and one red band at 25 kDa and 75 kDa respectively). Tri-Color markers are ideal for western blotting applications, as the enhanced green and red bands make it easy to identify the orientation of the blot after transfer.

\* Apparent molecular weight (kDa) of each protein varies slightly with different running buffers. See product instructions for details.



Item no.	Description	Size
PR5010-BL	SmartCheck™ All Blue Regular Range Protein Marker, 10 bands, 9-180 kDa	250µl x 2
PR5011-BL	SmartCheck™ All Blue Regular Range Plus Protein Marker, 11 bands, 9-180 kDa	250µl x 2
PR5010-TC	SmartCheck™ Tri-Color Protein Marker, 10 bands, 9-180 kDa	250µl x 2
PR5012-TC	SmartCheck™ Tri-Color Extended Range Protein Marker, 12 bands, 9-245 kDa	250µl x 2
PR5013-TC	SmartCheck™ Tri-Color Extended Range Plus Protein Marker, 13 bands, 5-245 kDa	250µl x 2