

# JumboMix<sup>®</sup> 3500

Large capacity lab blender



Accuracy and heavy duty blending  
for large samples

interscience

# Blend up to 3500 mL!

**JumboMix**® lab blender guarantees optimal bacterial extraction by the action of its 2 paddles. Adapted to any volume between 200 mL and 3500 mL, it guarantees the homogenization in 30 to 60 s of all samples (up to 400 g).

**Applications:** *E. Coli O157:H7*, trichinella (WarmMix® model), *Salmonella spp*, baby milk powder, chocolate, sterility control tests, Cryptosporidium and Giardia parasites, sample pooling (e.g.: 15 samples of 25 g to reach 375 g)...

## Powerful and heavy duty

- Up to 3500 mL capacity
- Ideal for your 375 g samples diluted to 1/10<sup>th</sup>
- Very silent

## Ergonomic

- Side-by-side paddle stop: easy insertion of the bag
- All 304L stainless steel trolley, ergonomic height (in option)
- Digital screen

## PATENTED

### Easy cleaning

- All stainless steel
- 270° fully opening door
- **Click & Clean**® removable paddles

### Security

- The handle shuts and starts the blending
- **Q-Tight**® closing: no leaks upwards
- Security drip tray



## Guarantee

- Life-time warranty: Shock absorbers and window
- 3 year warranty (after validation of the card)
- Made in France

## PATENTED

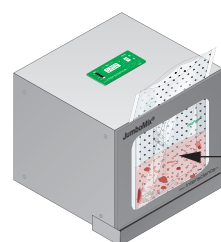
### Adjustable blending power

- Adapt the blending power to your sample
- Up to 22.6 kg thrust: hard samples are blended

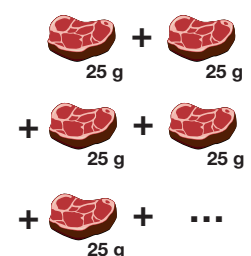


### Ideal for your applications

- 375 g for *Salmonella spp*
- 75, 325 or 375 g sample for *E. Coli O157:H7*
- 125 g sample for *Listeria* and *Listeria monocytogenes*
- Sample pooling



#### SAMPLE POOLING



# JumboMix® 3500

3 models available:



## JumboMix® 3500 P CC

> Essential features

Ref. 031 230



## JumboMix® 3500 W CC

> Window door

Ref. 032 230



## JumboMix® 3500 WarmMix® CC

> Thermal regulation up to + 50°C

Ref. 033 230



Technical specifications at the back of the brochure →

# JumboLine®

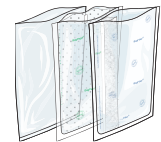
Ideal for your preparation of 375 g samples diluted to 1/10<sup>th</sup>!



## DiluFlow® + JumboKit

Gravimetric dilutor

DiluFlow® Elite - Ref. 503 205 • DiluFlow® Pro - Ref. 502 205 • JumboKit - Ref. 505 006



## BagFilter®

Lateral filter bags for lab blenders

2000 mL - Ref. 111 200

3500 mL - Ref. 113 510

## BagPage®

Full-page filter bags for lab blenders

2000 mL - Ref. 122 200

3500 mL - Ref. 123 010

## BagLight®

Bags for lab blenders

2000 mL - Ref. 132 200

3500 mL - Ref. 133 025



## JumboStand

Ergonomic trolley

Ref. 037 000



## BagOpen® 3500

Bag opener

Ref. 211 350



## BagRack® 3500

Storage rack for bags

2 comp. - Ref. 221 352

4 comp. - Ref. 221 350



## BagClip® 3500

Closing clips

Ref. 231 350



## BagPipet® & BagTips®

Pipet - Ref. 251 091

Tips - Ref. 252 024

# Technical specifications

	JumboMix® 3500 P CC	JumboMix® 3500 W CC	JumboMix® 3500 WarmMix® CC	
Reference	031 230	032 230	033 230	
<b>EQUIPMENT</b>	Window door	-	✓	
	270° opening door	✓	✓	
	Security drip tray	in option	✓	
	Adjustable blending power (up to 22.6 kg thrust)	✓	✓	
	Blending power indicator	✓	✓	
	Digital screen	✓	✓	
	Q-Tight® anti-leak system	✓	✓	
	Side-by-side paddle stop	✓	✓	
	Click & Clean® removable paddles (patented)	✓	✓	
	All 304 L stainless steel	✓	✓	
	Compact and ergonomic	✓	✓	
Regulated heating door	-	-	✓	
<b>TECHNICAL SPECIFICATIONS</b>	Door weight	6.9 kg	3.9 kg	6.1 kg
	Variable blending time	from 1 s to 59 min, ∞, count-down		
	Variable speed	1.5 / 3 / 4.5 / 6 strokes/s		
	Dimensions (w x d x h)	52 x 47 x 47 cm		63 x 50 x 47 cm
	Weight	53.2 kg	50.2 kg	63 kg
	Power	100-127 V~ / 220-240 V~ 50-60 Hz		
Capacity	200 - 3500 mL			
<b>WARRANTY</b>	Made in France	✓	✓	✓
	Life guarantee	Shock absorbers and window door		
	3 years warranty (after registration)	✓	✓	✓
<b>Certified production</b>	Products made for INTERSCIENCE by Interlab, an ISO 9001 certified company.		   	

Delivered with: Power cable, user's manual, security DripTray®, packs of bags. (\*only on JumboMix® 3500 W CC and JumboMix® 3500 WarmMix® CC).

## Discover our complete range for microbiology



**instaBAG®**  
Blender bags  
with dehydrated media



**DiluFlow®**  
Gravimetric dilutors



**FlexiPump®**  
Peristaltic pumps



**easySpiral Dilute®**  
Automatic diluter & platers



**ScanStation®**  
Real-time incubator  
& colony counter

Your local distributor

### interscience

30, chemin du Bois des Arpents - 78860 St Nom - FRANCE  
T: +33 (0)1 34 62 62 61 - Email: info@interscience.com

### interscience USA & CANADA

32 Cummings Park - Woburn, MA 01801 - USA  
P: +1 781 937 0007 - F: +1 781 937 0017 - Email: sales.usa@interscience.com

### interscience CHINE

上海市徐汇区肇嘉浜路798号坤阳大厦1903室 - 200030  
电话: +86 (0)21-64739390 - +86 189 3097 0733 - 邮址: sales.china@interscience.com

### interscience ASIE DU SUD-EST

The Centropod, 80 Changi Rd - 05-07 Singapore 419715  
T: +65 6909 0825 - M: +65 8118 5178 - E-mail: sales.asia@interscience.com

[www.interscience.com](http://www.interscience.com)