

Clear View Circulator Bath with KISS-Controller, consisting of transparent baths made of polycarbonate. Powerful pressure and suction pump made of industrial plastic material. With temperature range up to max. 100° C. With adjustable overtemperature protection according to DIN 12876.

NEW: KISS controller:

KISS combines state-of-the-art technology with simple operation and stylish design. Models with KISS controller are suitable for routine tasks in research and industry and are convincing as practice oriented basic equipment:

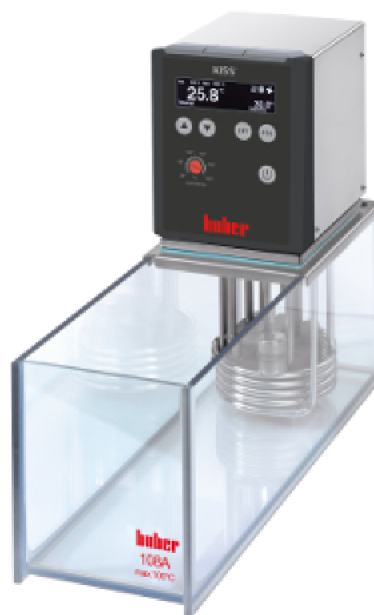
- * Large, bright OLED display
- * Simple operation with menu navigation
- * Simultaneous display of set point, internal temperature, Tmin and Tmax
- * Status displays for pump, cooling and heating
- * USB (Device) and RS232 interfaces
- * Overtemperature protection, Safety class 3 (FL)
- * Autostart function for power failure
- * 3 colour versions available: grey (standard), blue, red

Option: Pt100 sensor connection #10688 to display (not control) e.g. of the process temperature (only available factory fitted, additional charge).

3-2-2 warranty - registration required.

Technical data according to DIN 12876

Operating temperature range	25...100 °C
with water cooling	20...100 °C
with refrigerator	15...100 °C
Temperature stability at 70°C	0,05 K
temperature set point / display	digital
Absolute accuracy	setup for calibration
Internal temperature sensor	Pt100
Alarm message	optic, acoustic
Safety classification	Class III / FL
Heating power at 240V	2,1 kW
Heating power at 230V	2 kW
Heating power at 220V	1,8 kW
Heating power at 208V	1,6 kW
Heating power at 200V	1,5 kW
max. delivery	14 l/min
max. delivery pressure	0,25 bar
max. delivery (suction)	10,5 l/min
max. delivery pressure (suction)	0,17 bar
Pump connection (optional)	M16x1 male
Bath volume	8 l
Filling capacity	6,6 l
Height of bath opening	160 mm
Width bath opening WxD/ bath depth	130x210/ 150 mm
Overall dimensions WxDxH **	147x407x330 mm
Net weight	6 kg
Power supply requirement	200-240V 1~/2~ 50/60Hz
max. current	10 A
min. Fuse	10A
max. Fuse	16A
Degree of Protection	IP20
min. ambient temperature	5 °C
max. ambient temperature	40 °C



Order-No.: 2050.0003.98

from Serial-No.:

402345

1.0/20

Technical details and dimensions are subject to change. No liability is accepted for errors or omissions. Illustrations can deviate from the original.

Included Accessories:

bath bridge #19592

Optional accessories:

Technical data according to DIN 12876

bath cover #37552, cooling coil #30554, pump adaptor #19606, hose connector NW8/NW12, nozzle #33288, temperature control / - connection hoses, thermofluids, further accessories, etc.: see catalog.

Output data valid for: Room temperature 20° C

In accordance with EN60034-1 the following voltage and frequency tolerances are valid:

Voltage + / - 10%, as long as the frequency tolerance does not run in the opposite direction.

Example: -10% voltage and +3% frequency -> not allowed !

-10% voltage and -3% frequency -> allowed.

Information to Electromagnetic compatibility:

Classification (disturbance) to EN55011: Class A, Group 1

Special Case: Acetone and Polyglycol: The plastic pump is not resistant against acetone and polyglycols (depending on the manufacturer).

It is recommended that water is mixed with either glysantine or ethylene glycol for freeze protection. A more resistant plastic is available on request at an additional cost.

Standard delivery conditions - Power cable configuration:

1. Single-phase devices (230V/115V) -> with cable and plug

2. Three-phase devices with current consumption less than 63A -> with cable, without plug

3. Three-phase devices with current consumption greater than 63A -> without cable, without plug

** Please respect space requirements. See operating conditions at www.huber-online.com